

# Bastrop County Parks and Open Space Master Plan 2021-2031 Community Outreach Map Book

---

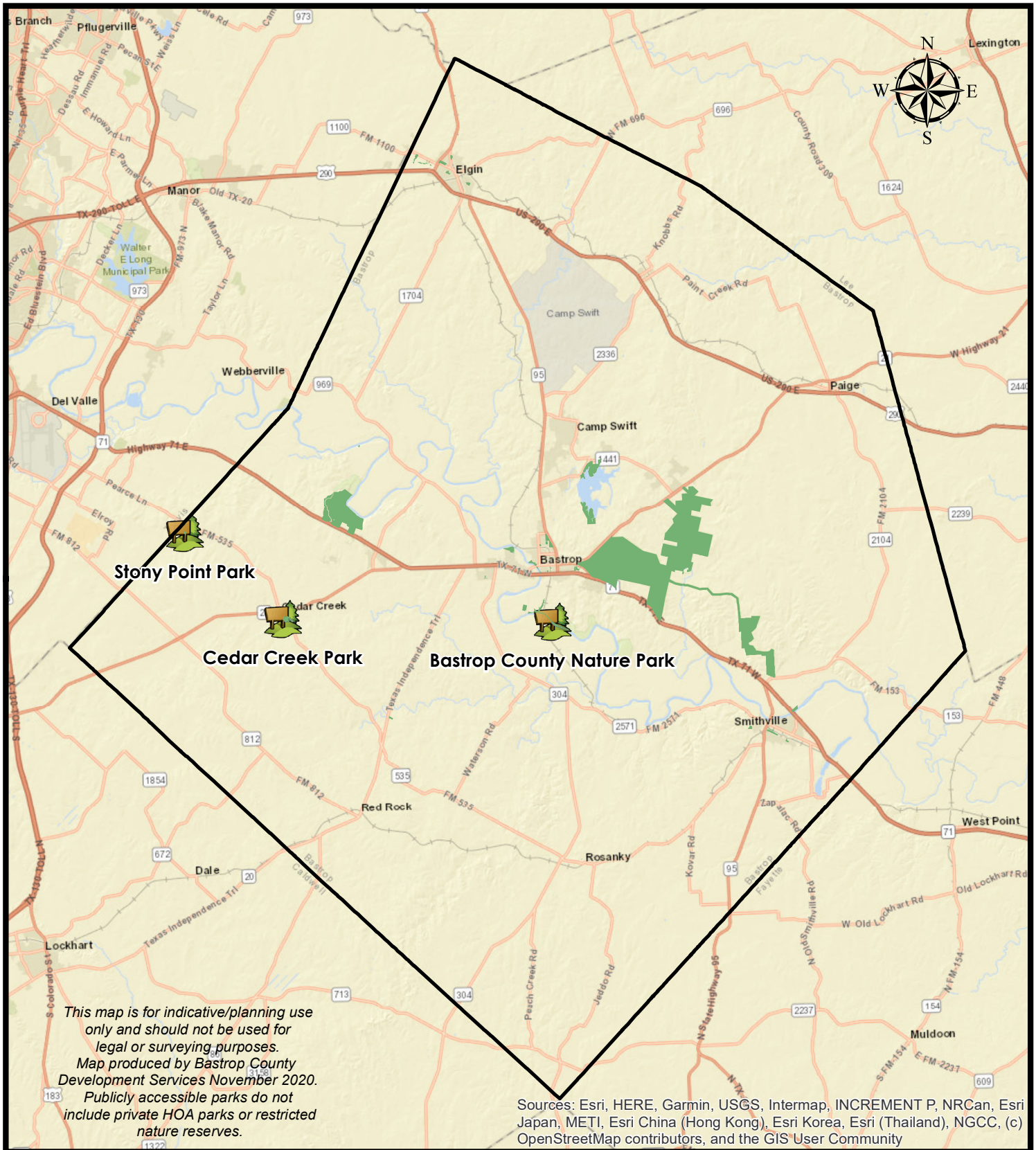
*Updated December 2020*

## *Note on GIS Map Data*



In 2018 and 2019, Bastrop County participated in the development of the Healthy Parks Plan for Travis, Bastrop and Caldwell Counties. The plan was funded by the St David's Foundation and led by the Trust for Public Land (TPL) with assistance from Asakura Robinson and TBG Partners. As part of this initiative, a GIS Based Decision Making Portal was produced in order to allow local decision makers to identify parkland development areas and projects based on their values and priorities. A number of the maps shown in this book have been created utilizing GIS data developed as part of that planning effort.

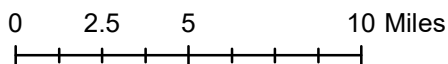
The Healthy Parks Plan Portal and documentation can be found here - <http://web.tplgis.org/healthyparksplan/>

# Location of Bastrop County Parks



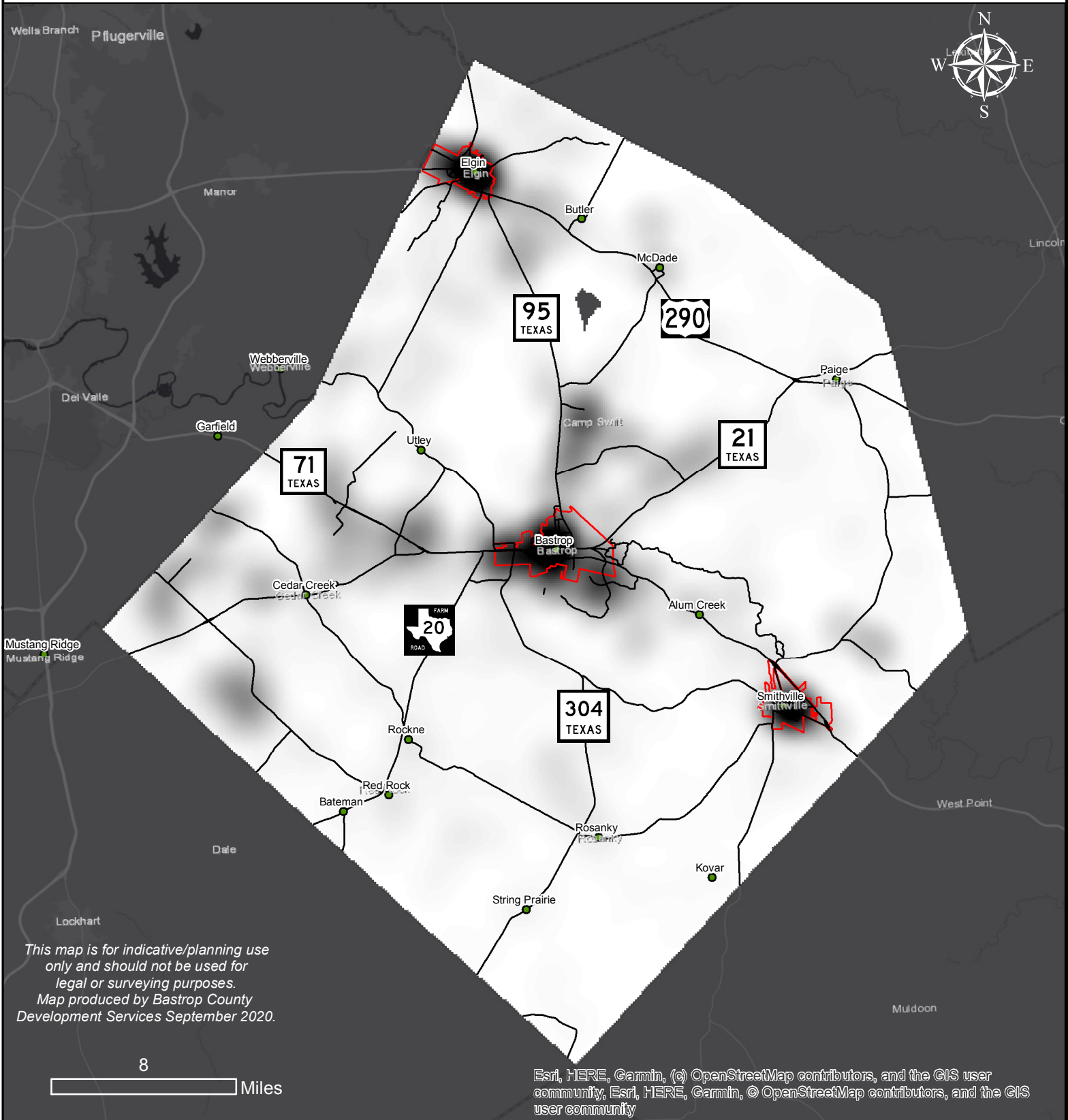
## Legend

-  Publicly Accessible Parks in Bastrop County
-  Bastrop County Parks (owned and managed by BC)



## Bastrop County Parks and Open Space Master Plan

# Address Density in Bastrop County



**Legend**  
Address Density Sep 2020

Value

High : 2023.32

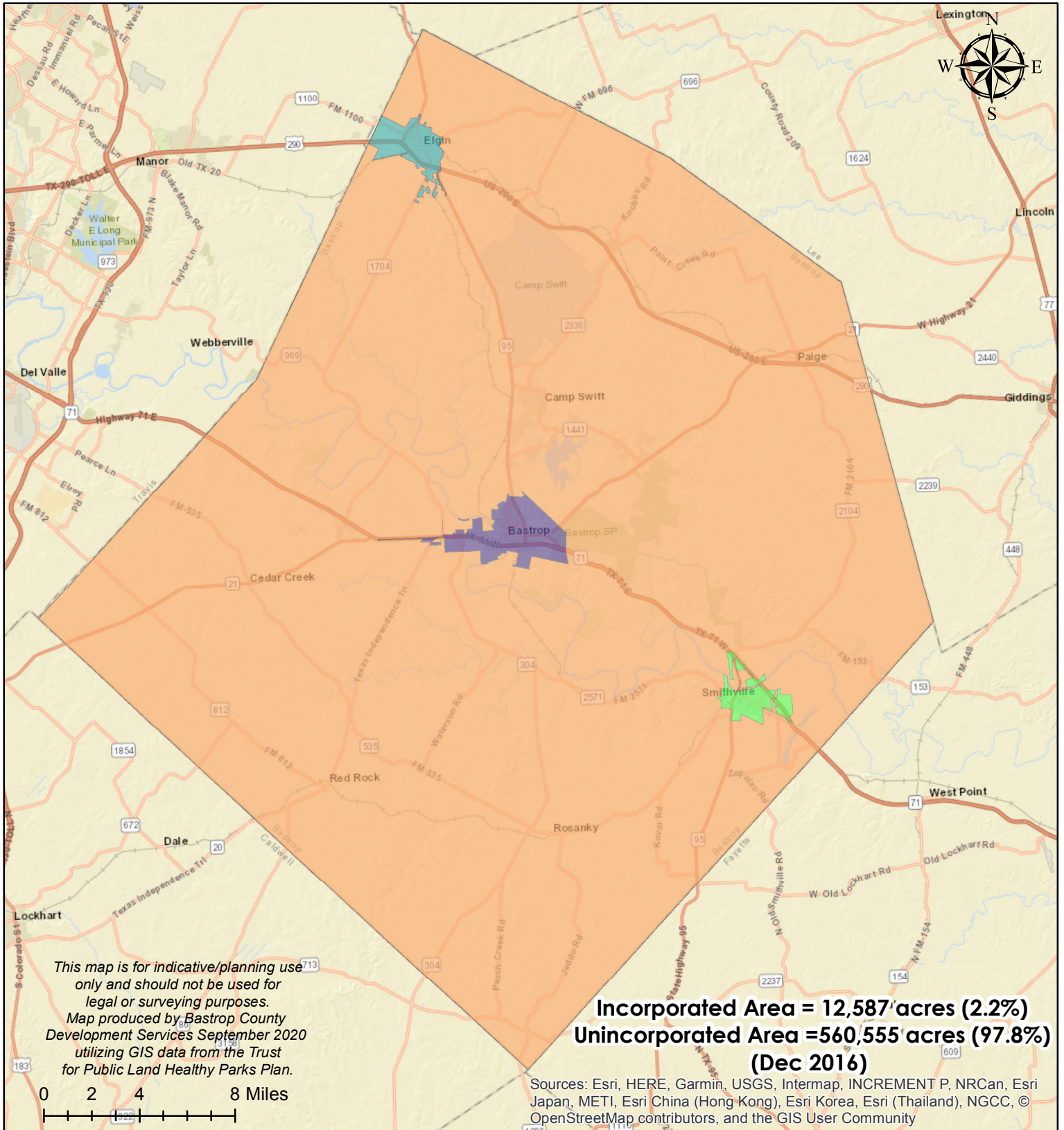
Low : 0

City Limits



## Bastrop County Parks and Open Space Master Plan

# "Incorporated" vs "Unincorporated" Bastrop County



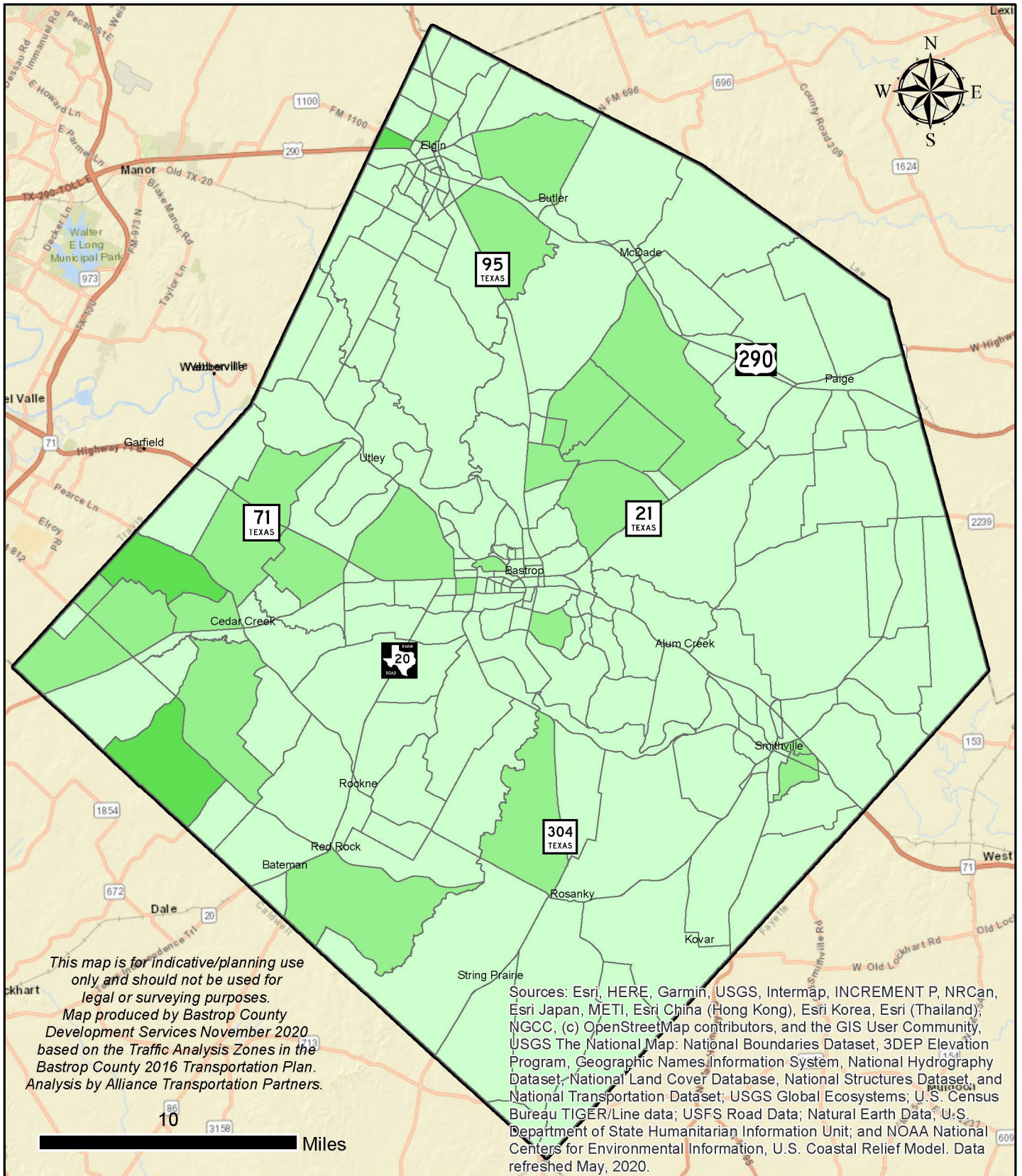
## Jurisdiction

- UNINCORPORATED BASTROP COUNTY
- (INCORPORATED) CITY OF BASTROP
- (INCORPORATED) CITY OF ELGIN
- (INCORPORATED) CITY OF SMITHVILLE



## Bastrop County Parks and Open Space Master Plan

# Bastrop County 2010 Population Distribution

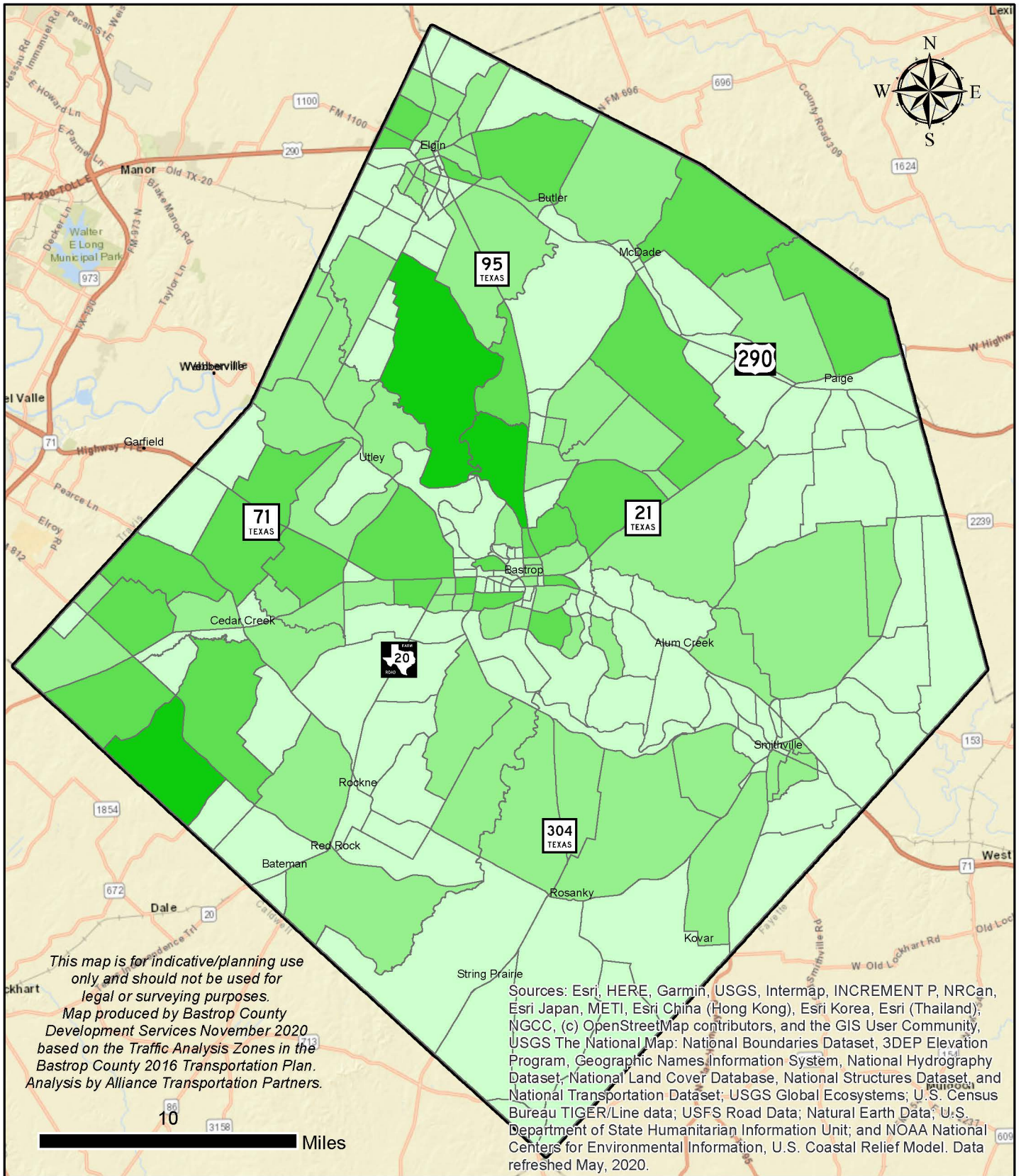


Population	
	0 - 716
	717 - 1,900
	1901 - 4,352



## Bastrop County Parks and Open Space Master Plan

# Bastrop County 2040 Population Distribution



*This map is for indicative/planning use only and should not be used for legal or surveying purposes.  
Map produced by Bastrop County Development Services November 2020 based on the Traffic Analysis Zones in the Bastrop County 2016 Transportation Plan. Analysis by Alliance Transportation Partners.*

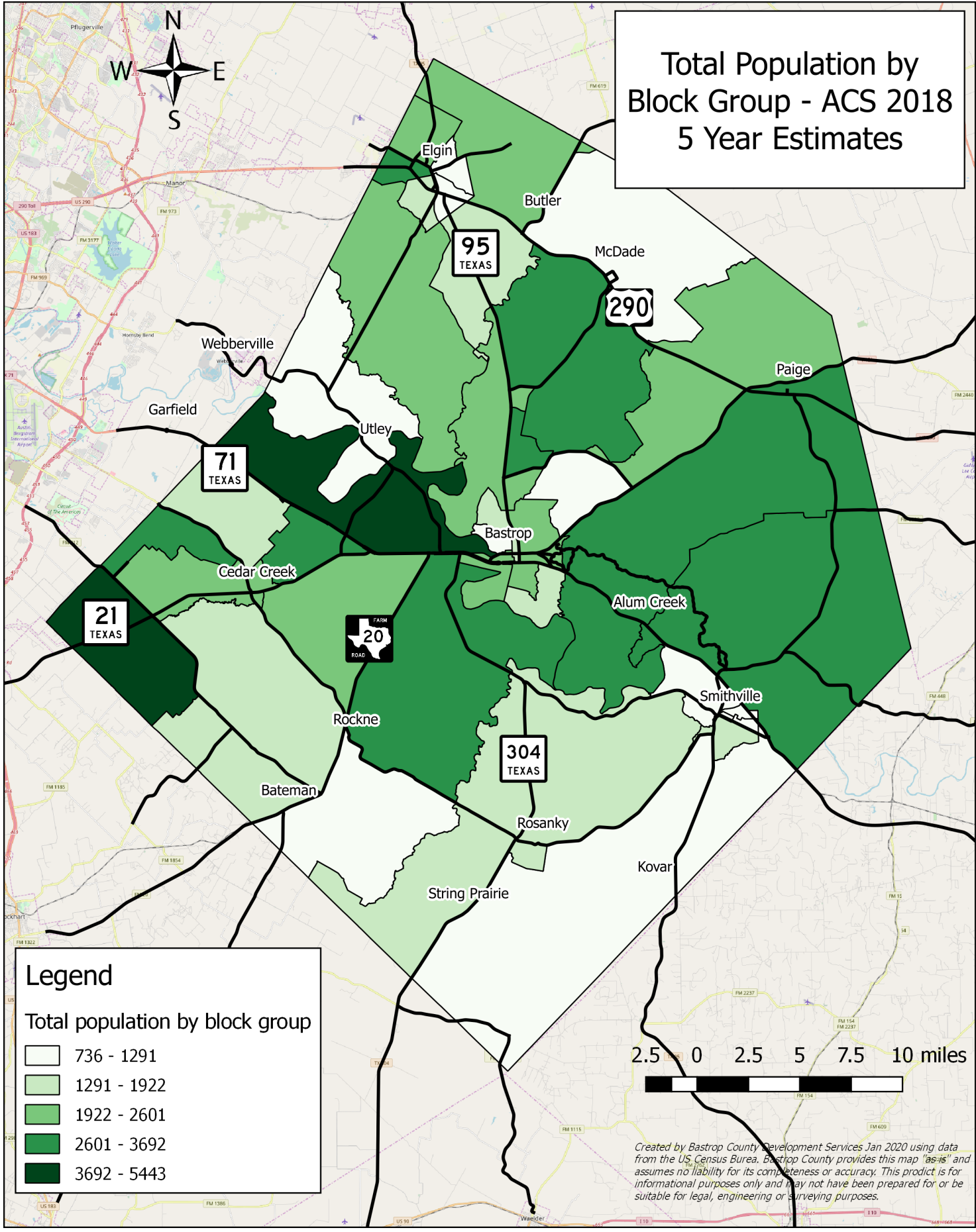
Sources: Esri, HERE, Garmin, USGS, Intermap, INCREMENT P, NRCan, Esri Japan, METI, Esri China (Hong Kong), Esri Korea, Esri (Thailand); NGCC, (c) OpenStreetMap contributors, and the GIS User Community, USGS The National Map: National Boundaries Dataset, 3DEP Elevation Program, Geographic Names Information System, National Hydrography Dataset, National Land Cover Database, National Structures Dataset, and National Transportation Dataset; USGS Global Ecosystems; U.S. Census Bureau TIGER/Line data; USFS Road Data; Natural Earth Data; U.S. Department of State Humanitarian Information Unit; and NOAA National Centers for Environmental Information, U.S. Coastal Relief Model. Data refreshed May, 2020.

Population	
	0-716
	717-1,900
	1,901-4,352
	4,353-15,686



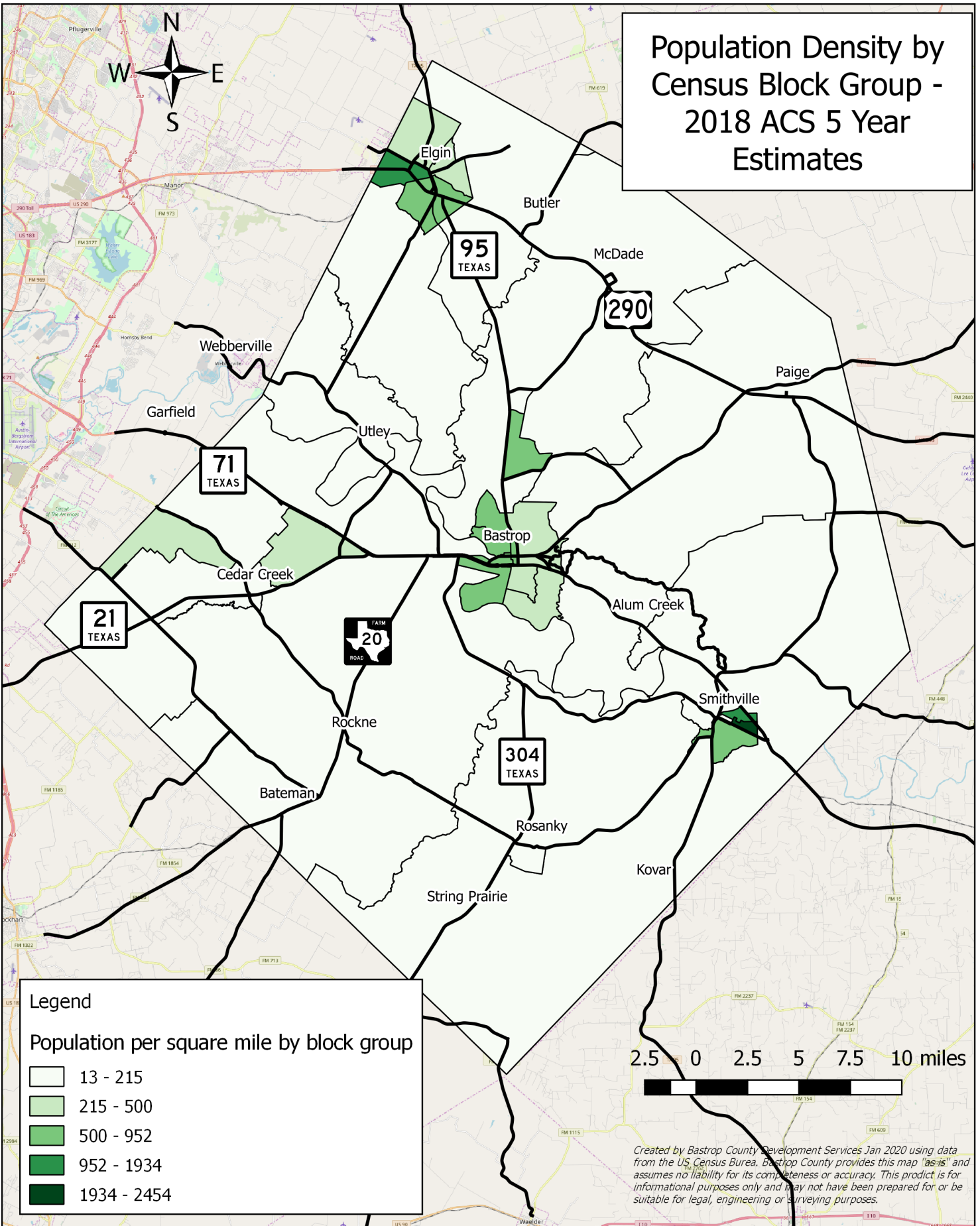
## Bastrop County Parks and Open Space Master Plan

# Total Population by Block Group - ACS 2018 5 Year Estimates



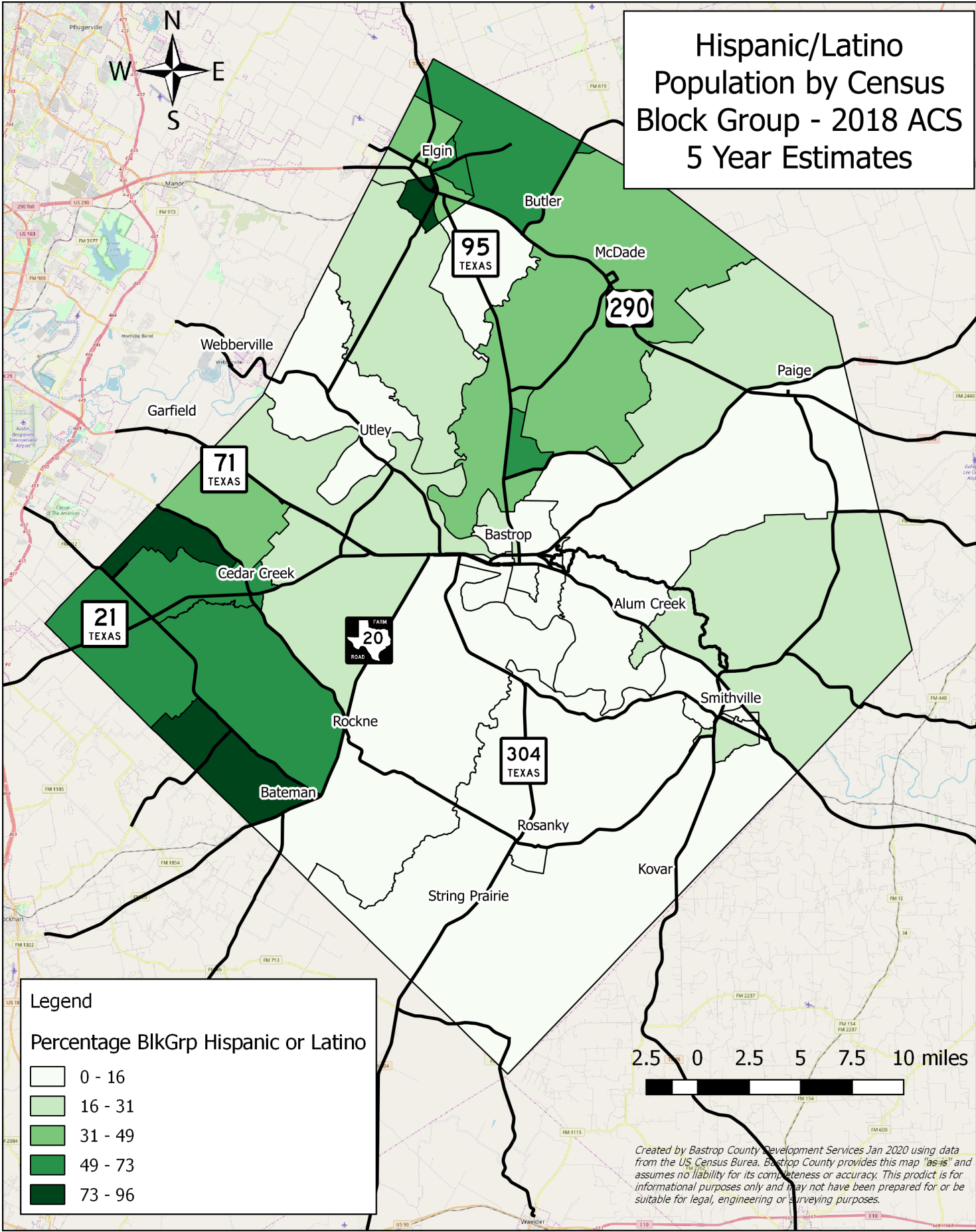
*Created by Bastrop County Development Services Jan 2020 using data from the US Census Bureau. Bastrop County provides this map "as-is" and assumes no liability for its completeness or accuracy. This product is for informational purposes only and may not have been prepared for or be suitable for legal, engineering or surveying purposes.*

# Population Density by Census Block Group - 2018 ACS 5 Year Estimates



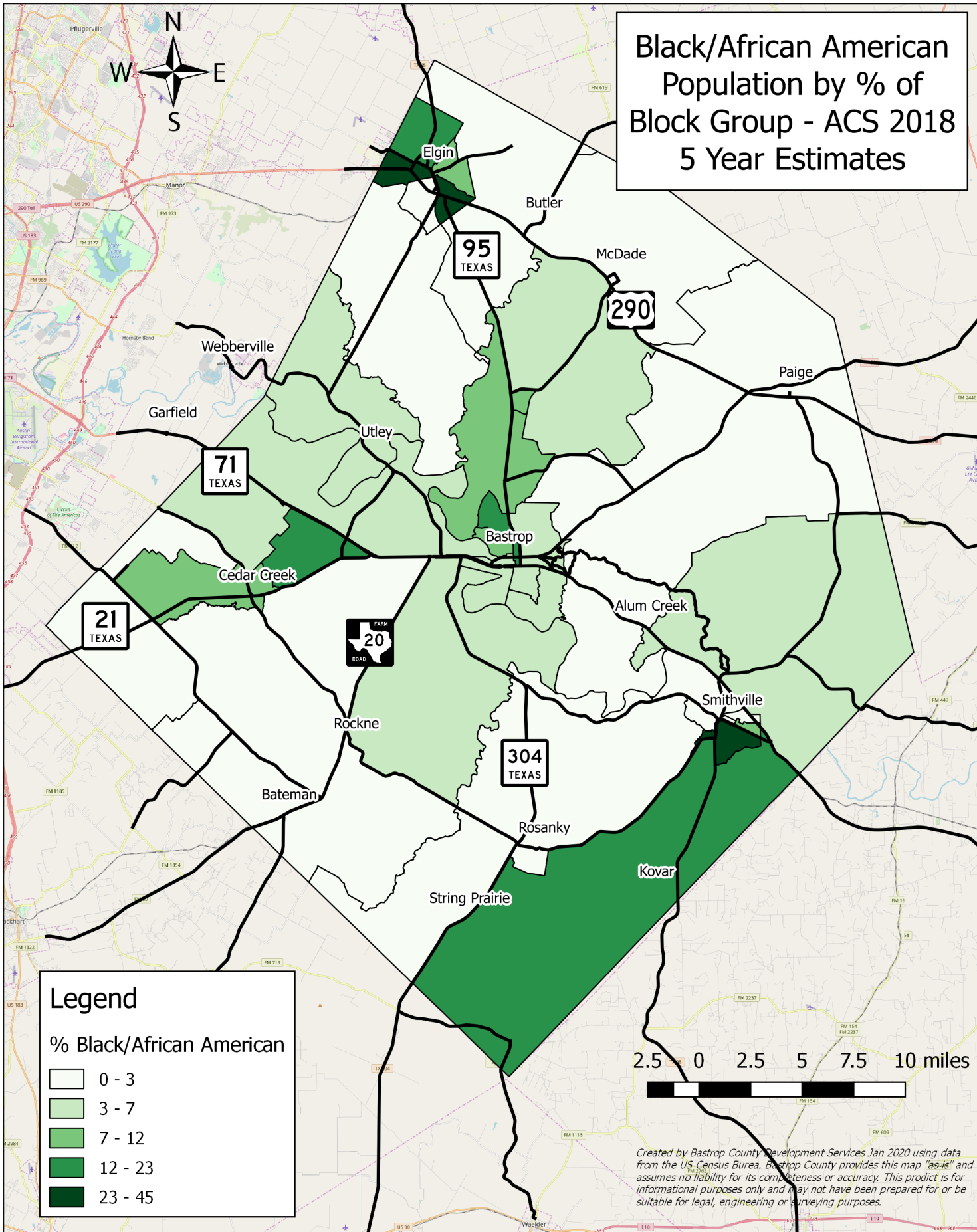


# Hispanic/Latino Population by Census Block Group - 2018 ACS 5 Year Estimates



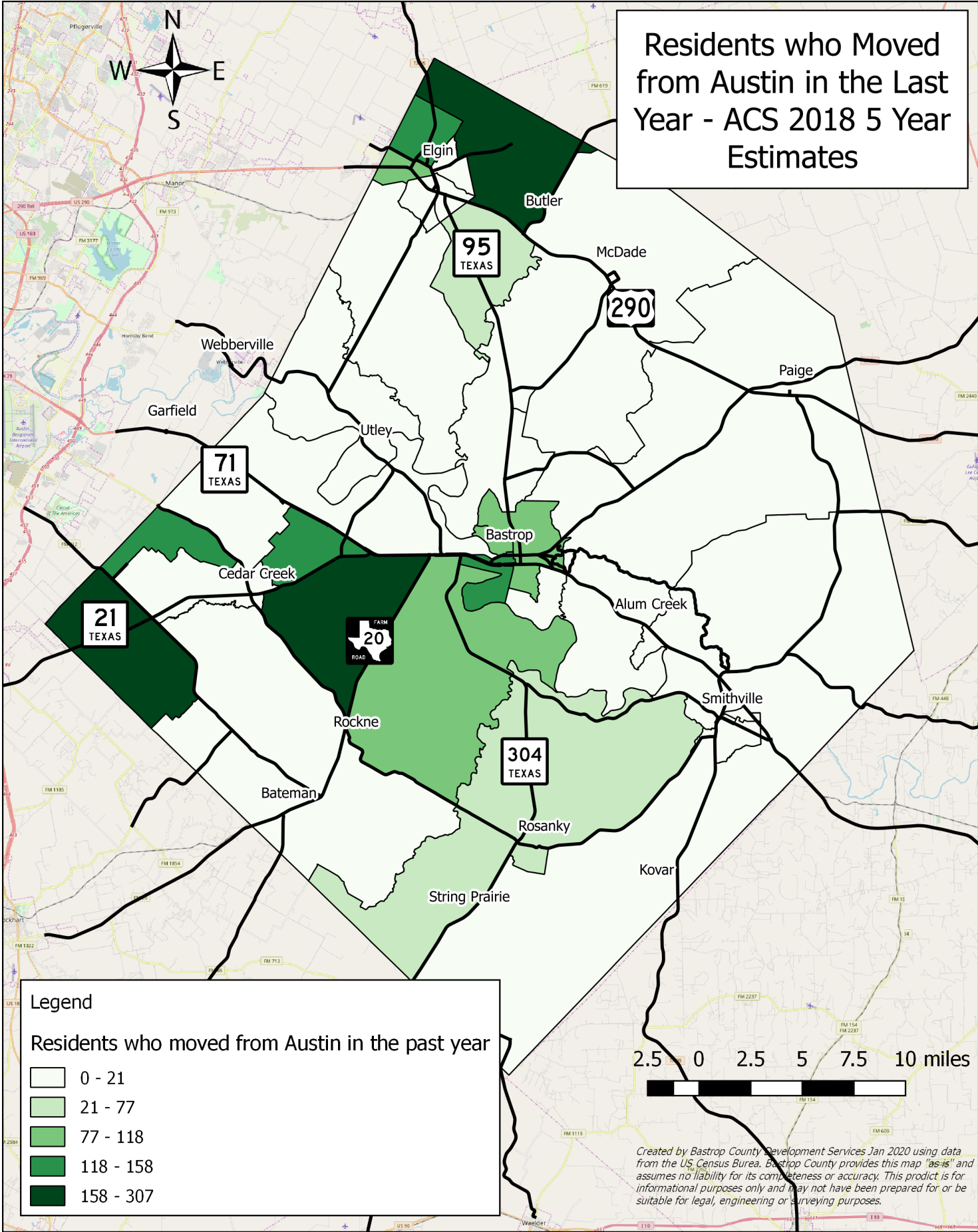
*Created by Bastrop County Development Services Jan 2020 using data from the US Census Bureau. Bastrop County provides this map "as-is" and assumes no liability for its completeness or accuracy. This product is for informational purposes only and may not have been prepared for or be suitable for legal, engineering or surveying purposes.*

# Black/African American Population by % of Block Group - ACS 2018 5 Year Estimates

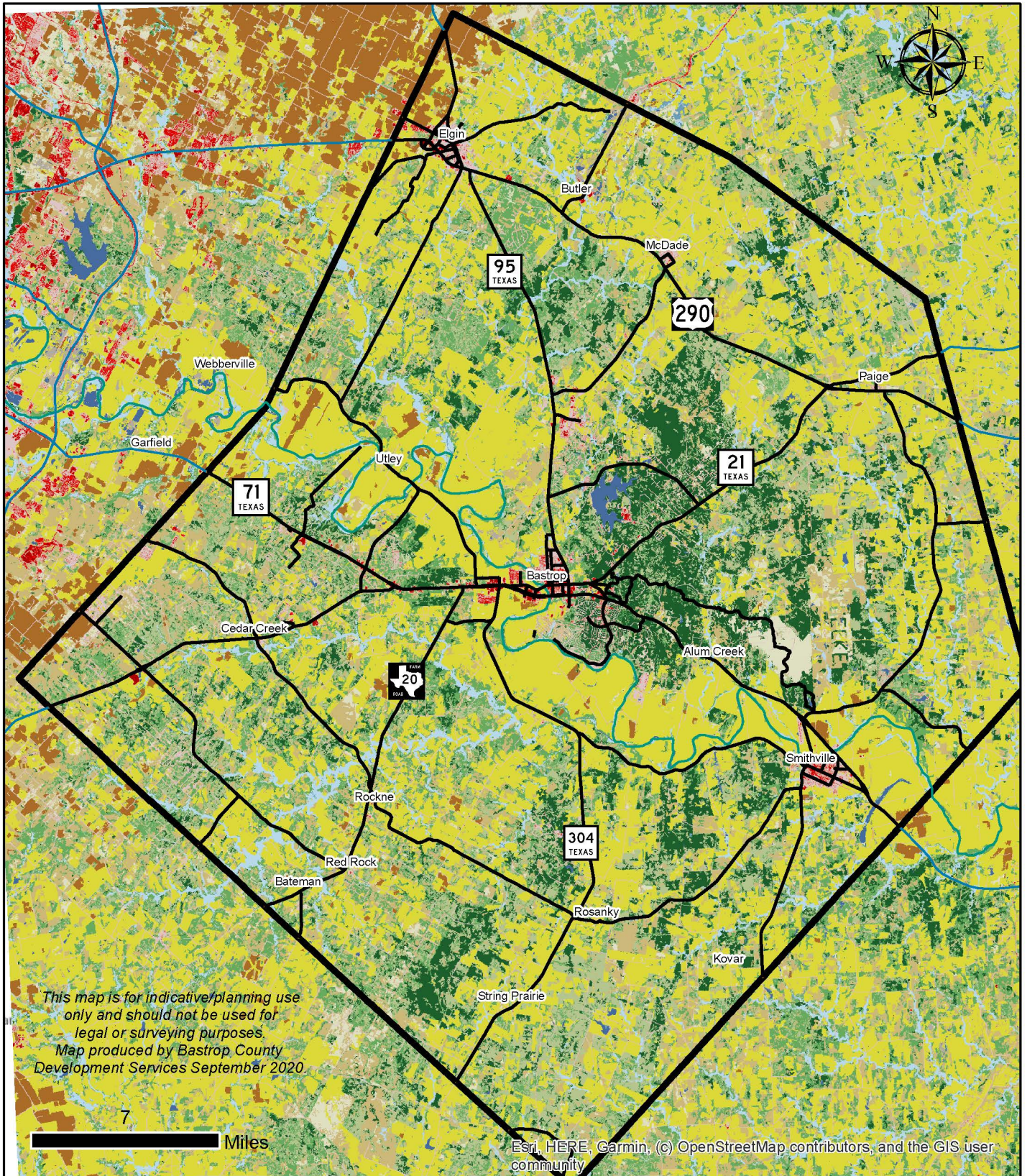


*Created by Bastrop County Development Services Jan 2020 using data from the US Census Bureau. Bastrop County provides this map "as-is" and assumes no liability for its completeness or accuracy. This product is for informational purposes only and may not have been prepared for or be suitable for legal, engineering or surveying purposes.*

# Residents who Moved from Austin in the Last Year - ACS 2018 5 Year Estimates



# Land Cover (National Land Cover Database 2016)



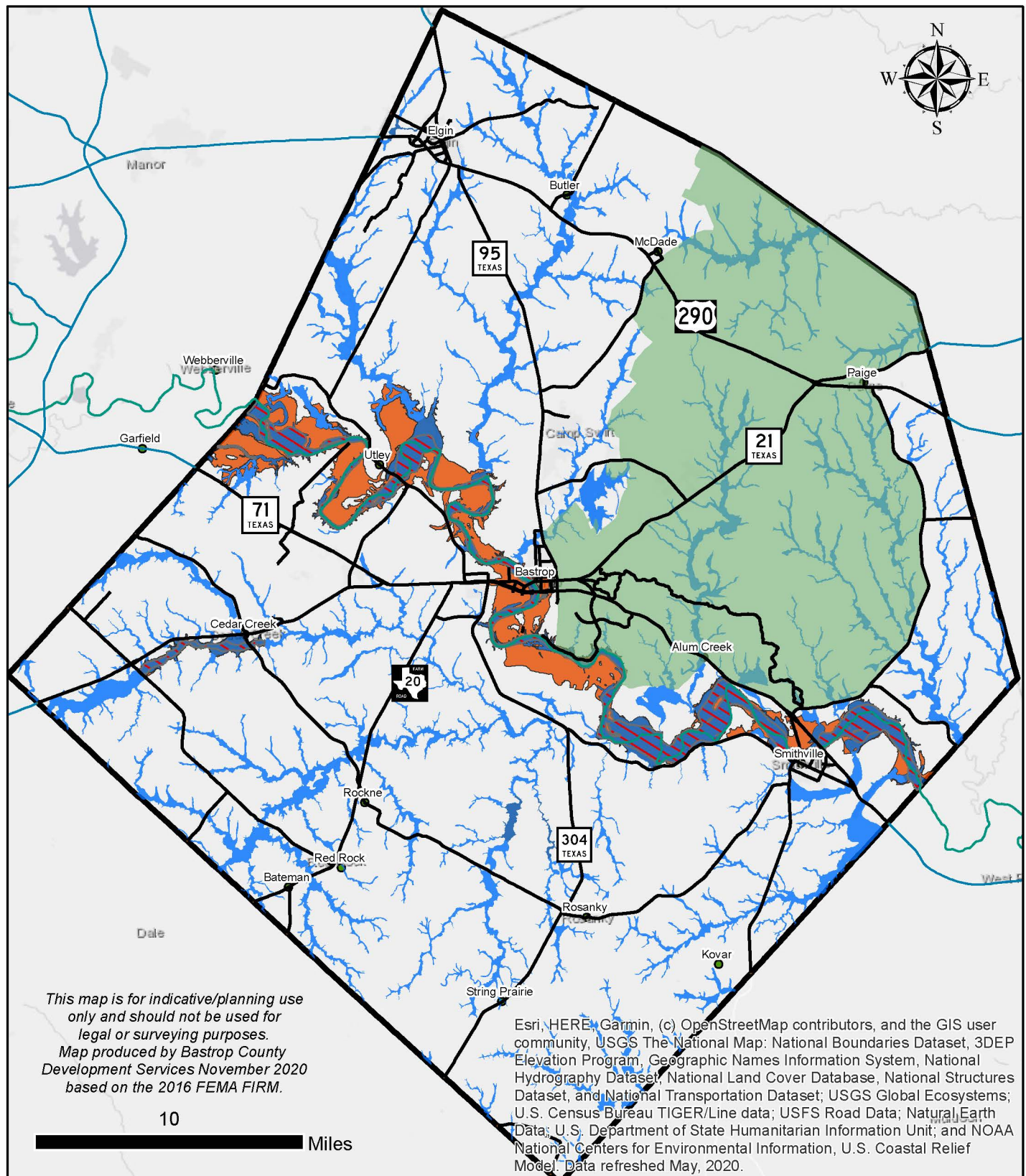
**Legend - National Land Cover Database Classification 2016**

11 - Open Water	43 - Mixed Forest
21 - Developed, Open Space	52 - Shrub/Scrub
22 - Developed, Low Intensity	71 - Grassland/Herbaceous
23 - Developed, Medium Intensity	81 - Pasture/Hay
24 - Developed, High Intensity	82 - Cultivated Crops
31 - Barren Land (Rock/Sand/Clay)	90 - Woody Wetlands
41 - Deciduous Forest	95 - Emergent Herbaceous Wetlands
42 - Evergreen Forest	



## Bastrop County Parks and Open Space Master Plan

# Bastrop County Environmental Constraints



*This map is for indicative/planning use only and should not be used for legal or surveying purposes.  
Map produced by Bastrop County Development Services November 2020 based on the 2016 FEMA FIRM.*

Esri, HERE, Garmin, (c) OpenStreetMap contributors, and the GIS user community, USGS The National Map: National Boundaries Dataset, 3DEP Elevation Program, Geographic Names Information System, National Hydrography Dataset, National Land Cover Database, National Structures Dataset, and National Transportation Dataset; USGS Global Ecosystems; U.S. Census Bureau TIGER/Line data; USFS Road Data; Natural Earth Data; U.S. Department of State Humanitarian Information Unit; and NOAA National Centers for Environmental Information, U.S. Coastal Relief Model. Data refreshed May, 2020.

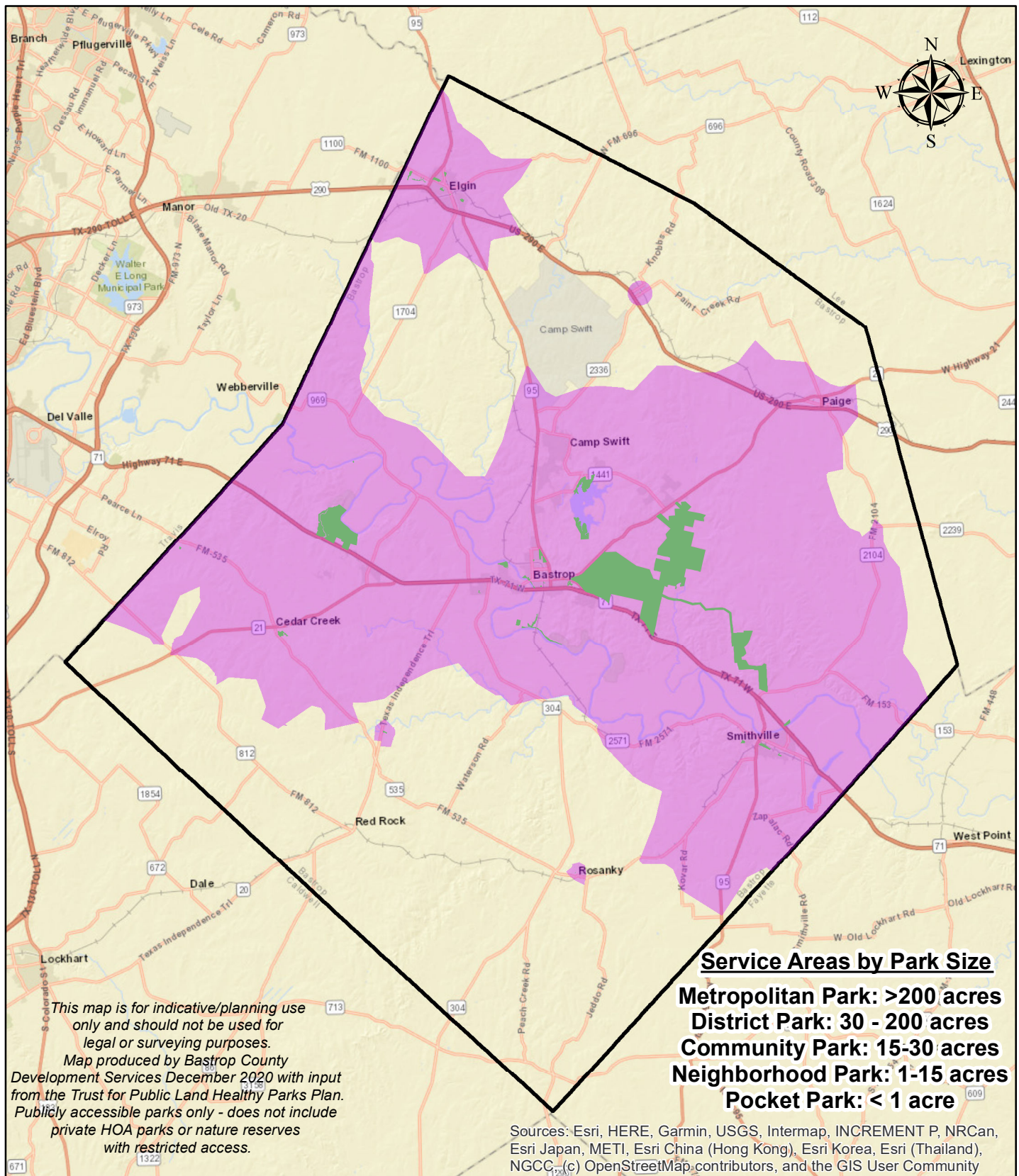
**Legend**

- LPHCP Area (Houston Toad)
- Floodway
- Special Flood Hazard Area**
- 0.2% Annual Flood Chance Hazard
- 1% Annual Flood Chance Hazard (Zone A)
- 1% Annual Flood Chance Hazard (Zone AE)



## Bastrop County Parks and Open Space Master Plan

# Bastrop County Land within Service Area of Any Park



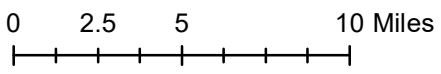
*This map is for indicative/planning use only and should not be used for legal or surveying purposes.  
 Map produced by Bastrop County Development Services December 2020 with input from the Trust for Public Land Healthy Parks Plan. Publicly accessible parks only - does not include private HOA parks or nature reserves with restricted access.*

**Service Areas by Park Size**  
**Metropolitan Park: >200 acres**  
**District Park: 30 - 200 acres**  
**Community Park: 15-30 acres**  
**Neighborhood Park: 1-15 acres**  
**Pocket Park: < 1 acre**

Sources: Esri, HERE, Garmin, USGS, Intermap, INCREMENT P, NRCan, Esri Japan, METI, Esri China (Hong Kong), Esri Korea, Esri (Thailand), NGCC, (c) OpenStreetMap contributors, and the GIS User Community

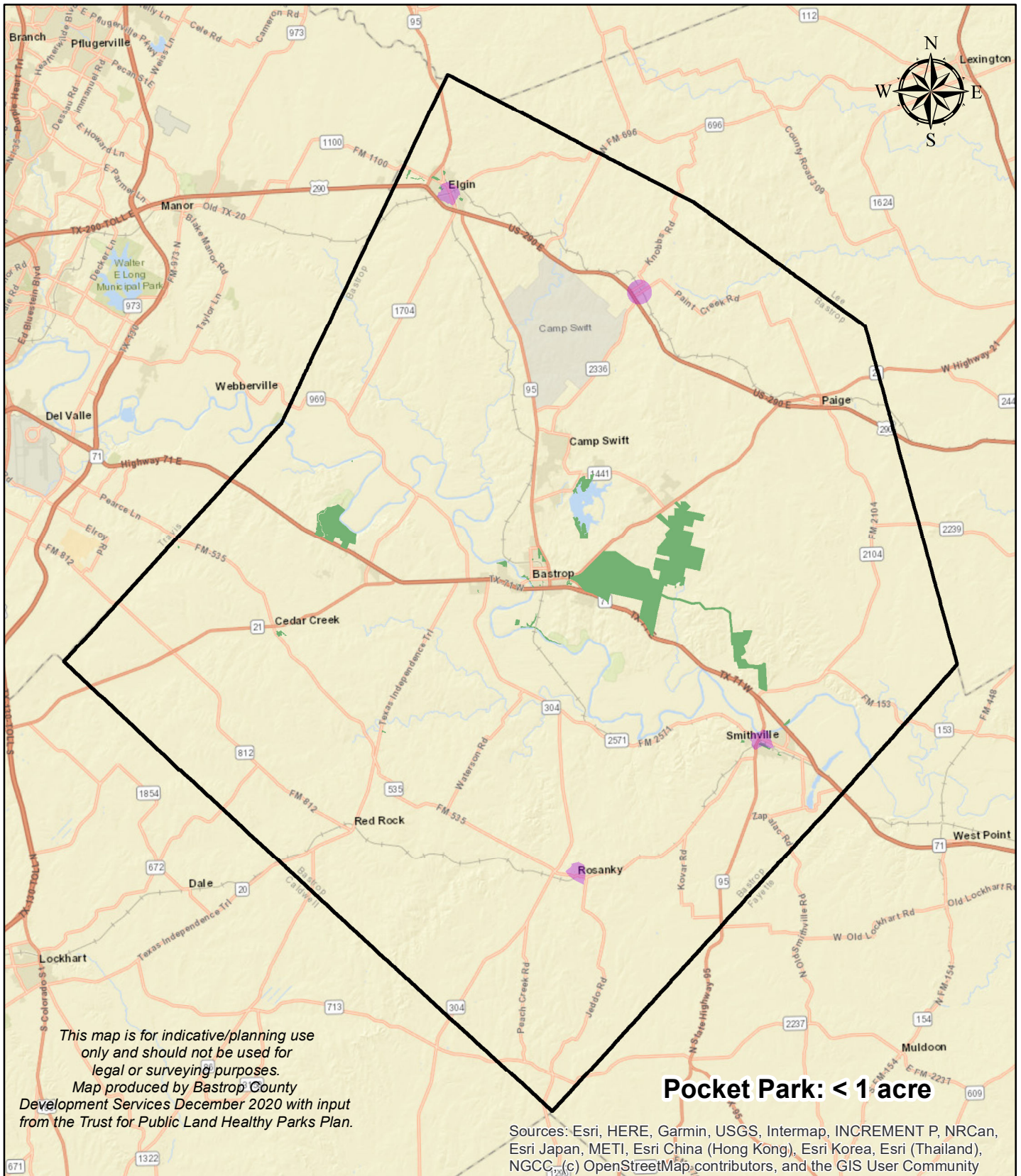
## Legend

- Publicly Accessible Parks in Bastrop County
- Land in Service Area of Any Park



## Bastrop County Parks and Open Space Master Plan

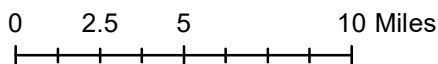
# Bastrop County Land within 0.5 Miles of a Pocket Park



*This map is for indicative/planning use only and should not be used for legal or surveying purposes.  
Map produced by Bastrop County Development Services December 2020 with input from the Trust for Public Land Healthy Parks Plan.*

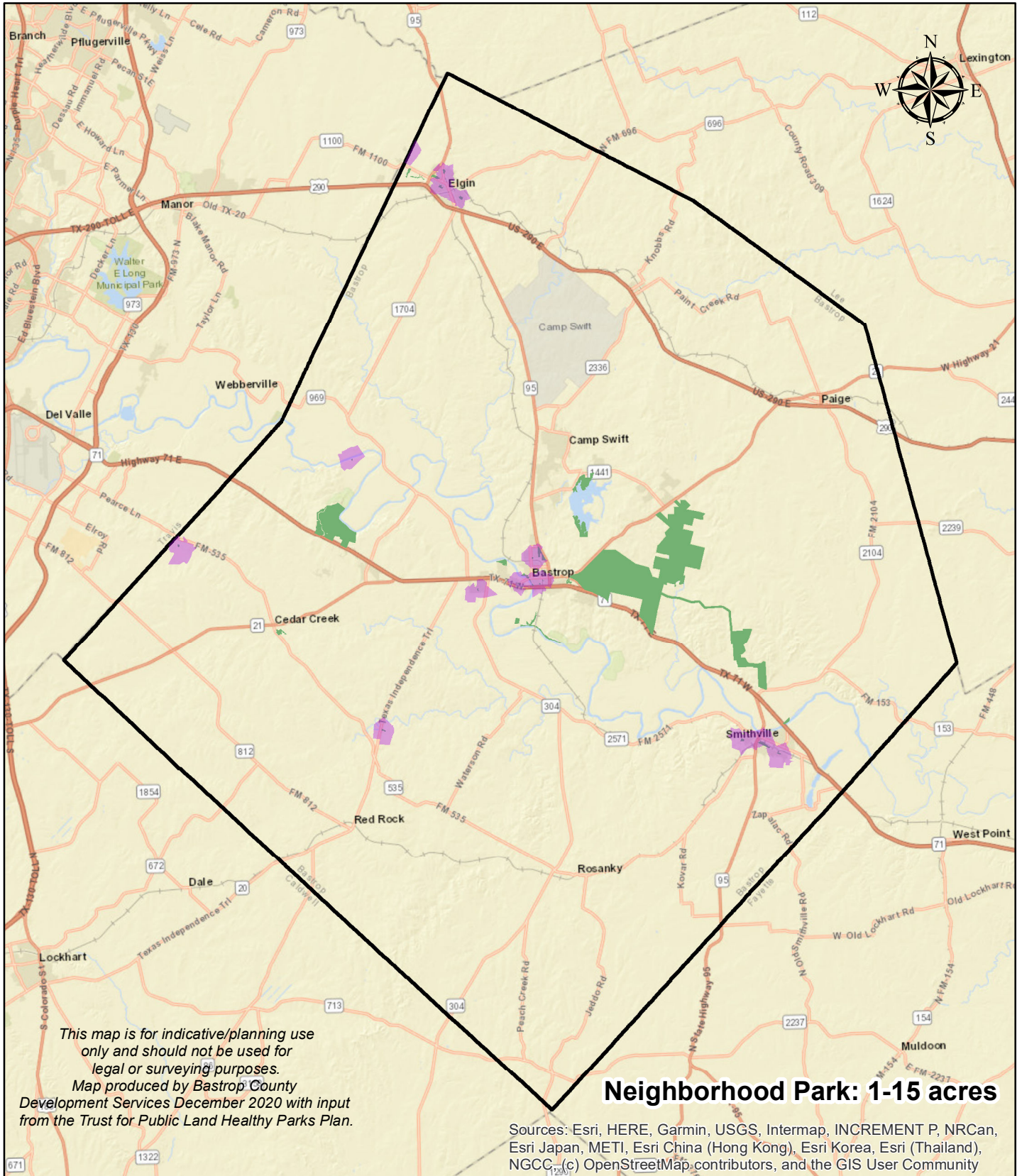
## Legend

- Within 0.5 Miles of a Pocket Park
- Publicly Accessible Parks in Bastrop County



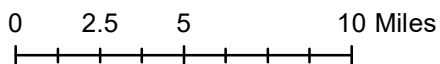
## Bastrop County Parks and Open Space Master Plan

# Bastrop County Land within 0.5 Miles of a Neighborhood Park



## Legend

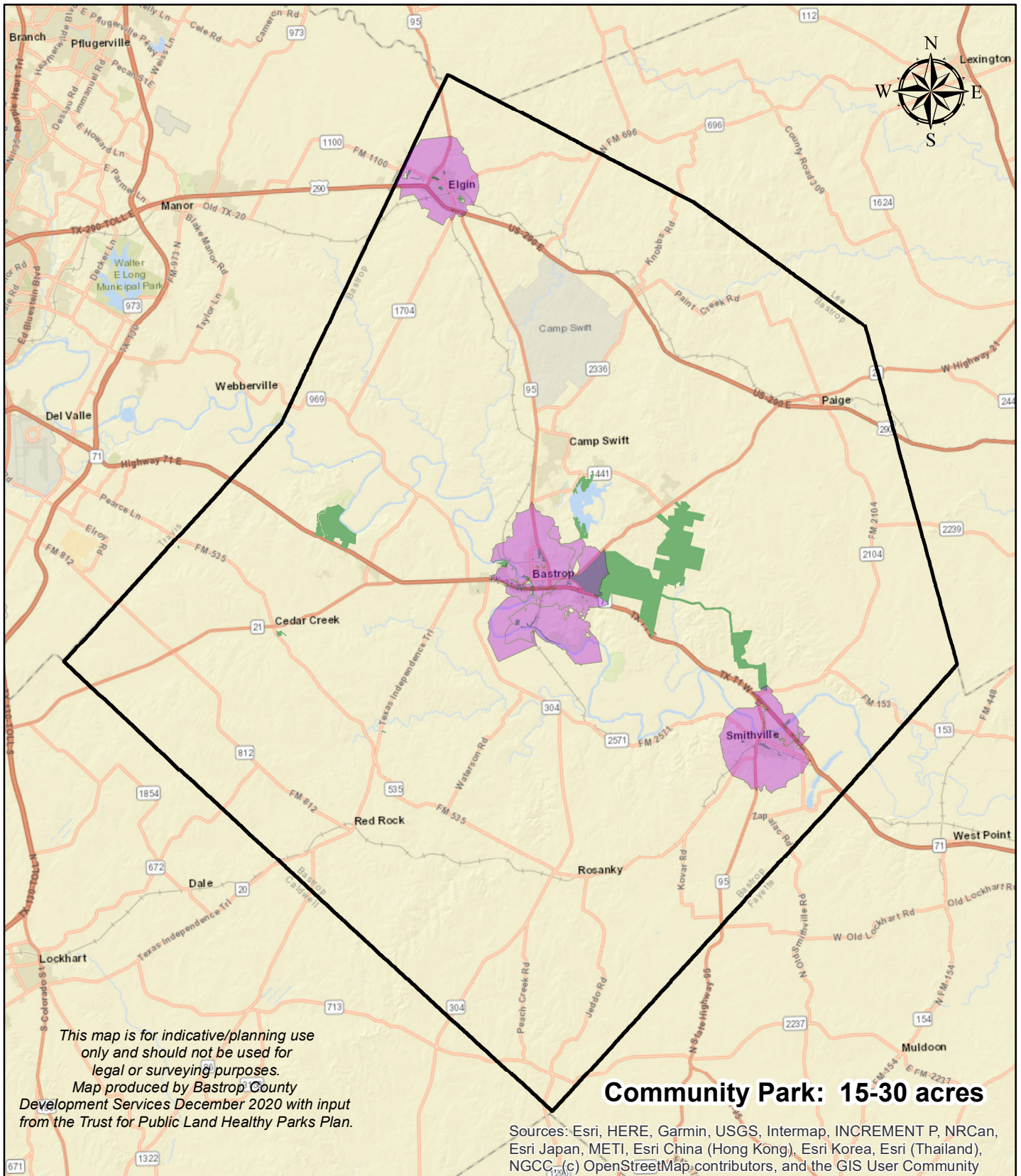
- Within 0.5 Miles of Neighborhood Park
- Publicly Accessible Parks in Bastrop County



## Bastrop County Parks and Open Space Master Plan

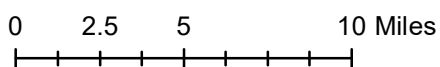


# Bastrop County Land within 2 Miles of a Community Park



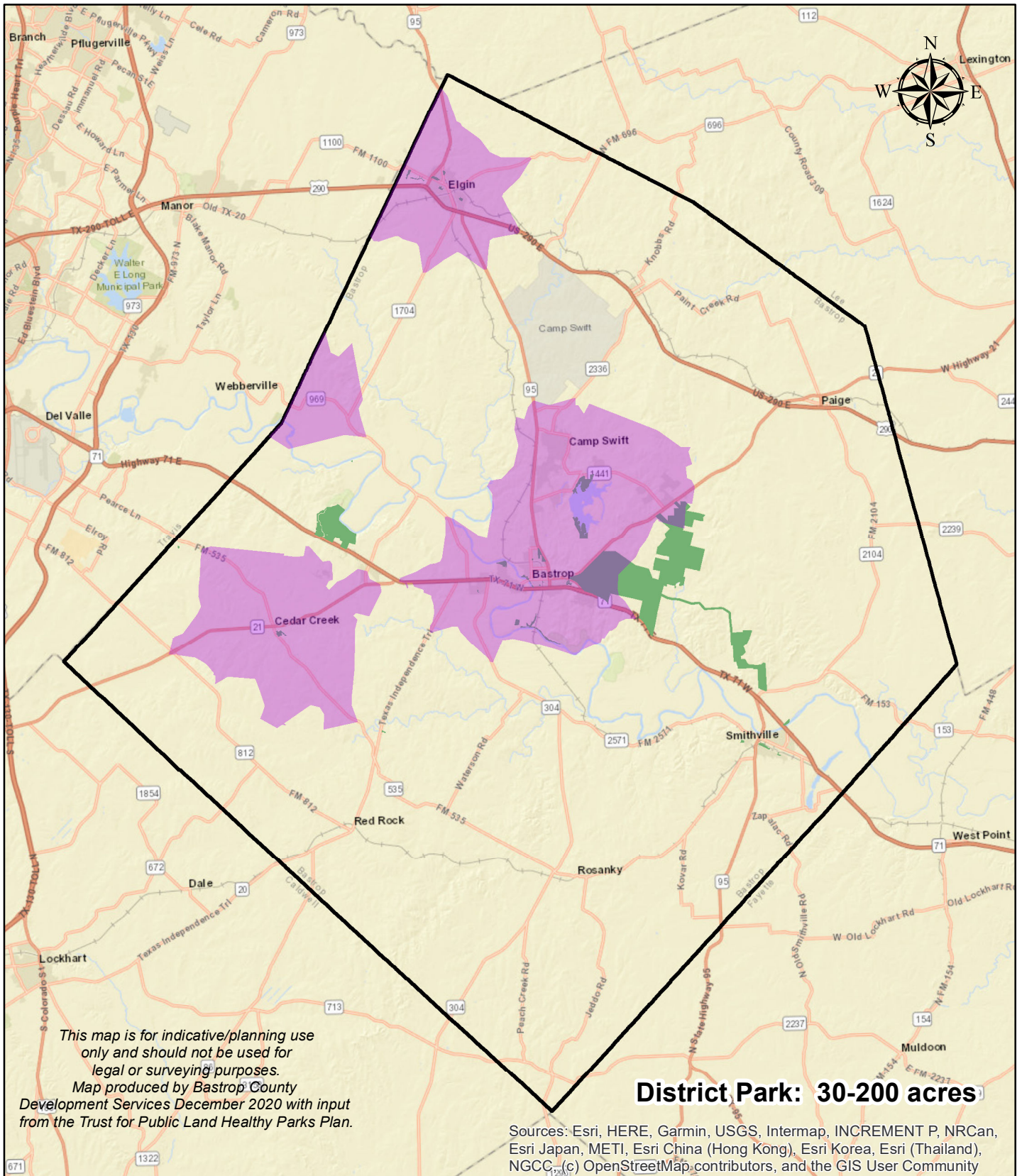
## Legend

- Publicly Accessible Parks in Bastrop County
- Within 2 Miles of a Community Park



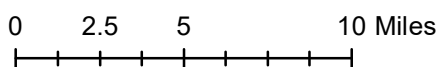
## Bastrop County Parks and Open Space Master Plan

# Bastrop County Land within 5 Miles of a District Park



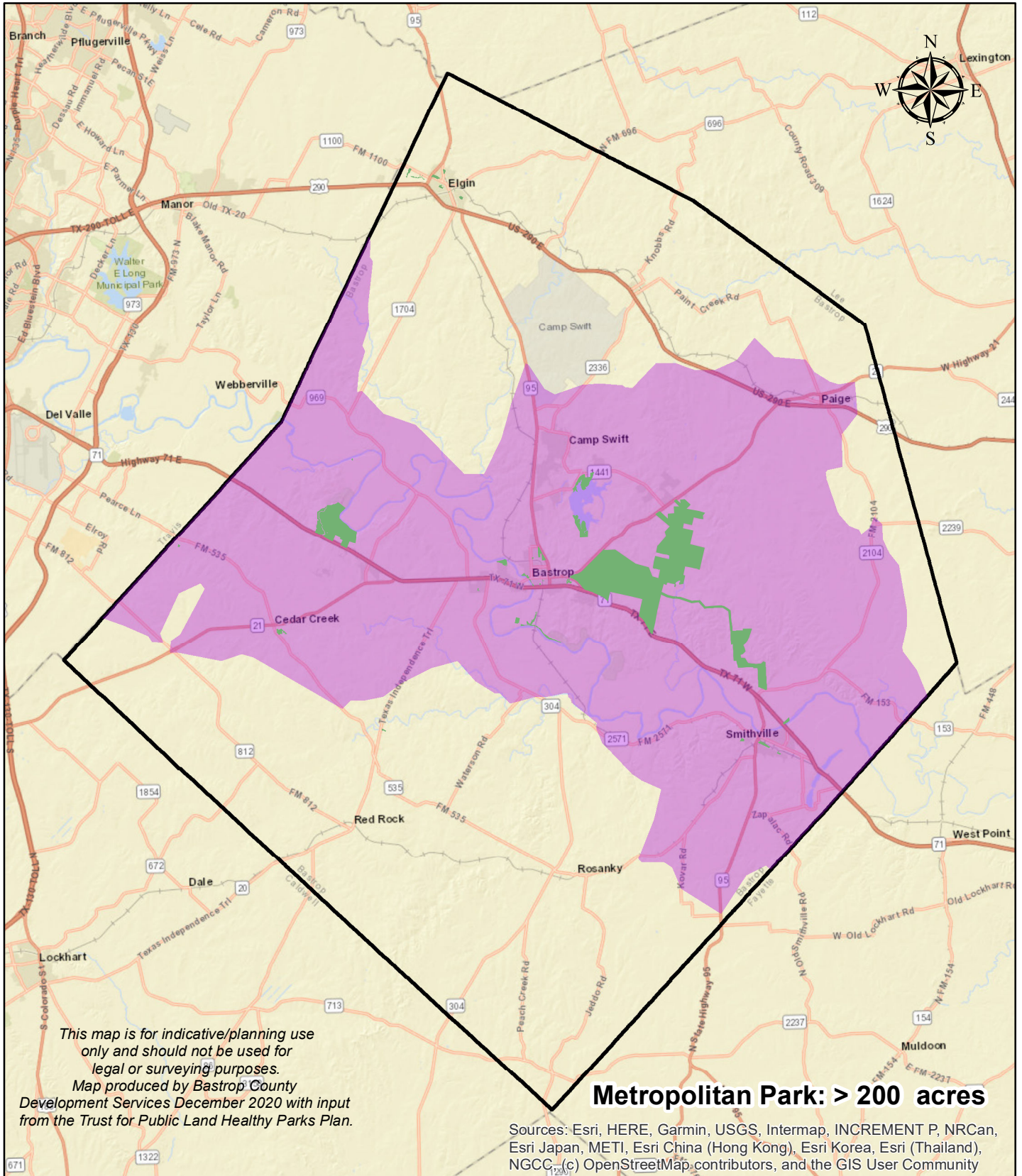
## Legend

- Publicly Accessible Parks in Bastrop County
- Within 5 Miles of a District Park



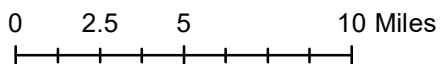
## Bastrop County Parks and Open Space Master Plan

# Bastrop County Land within 10 Miles of a Metropolitan Park



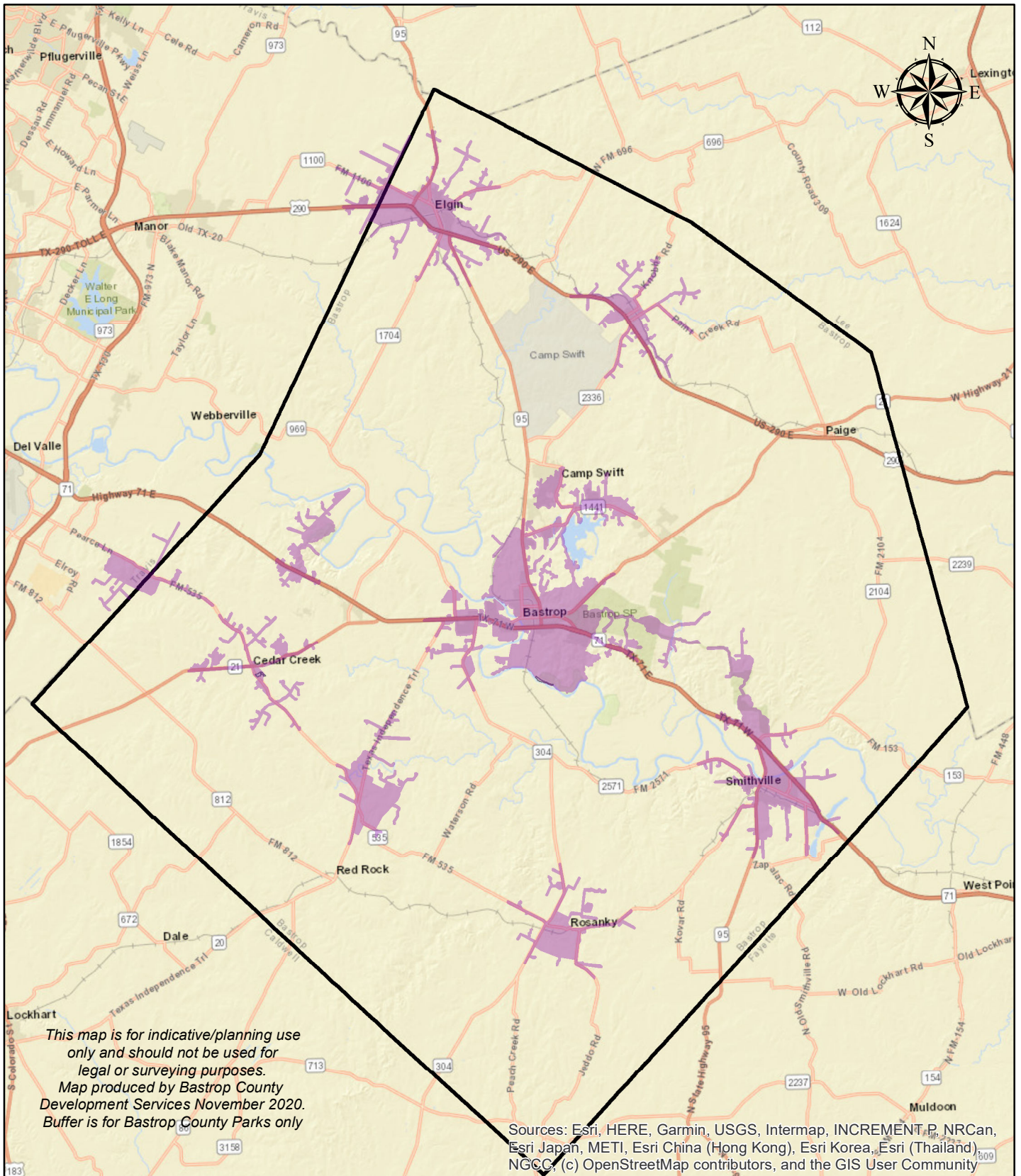
## Legend

- Publicly Accessible Parks in Bastrop County
- Within 10 Miles of Metropolitan Park



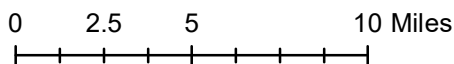
## Bastrop County Parks and Open Space Master Plan

# Parks in Bastrop County - 3 Mile Driving Distance



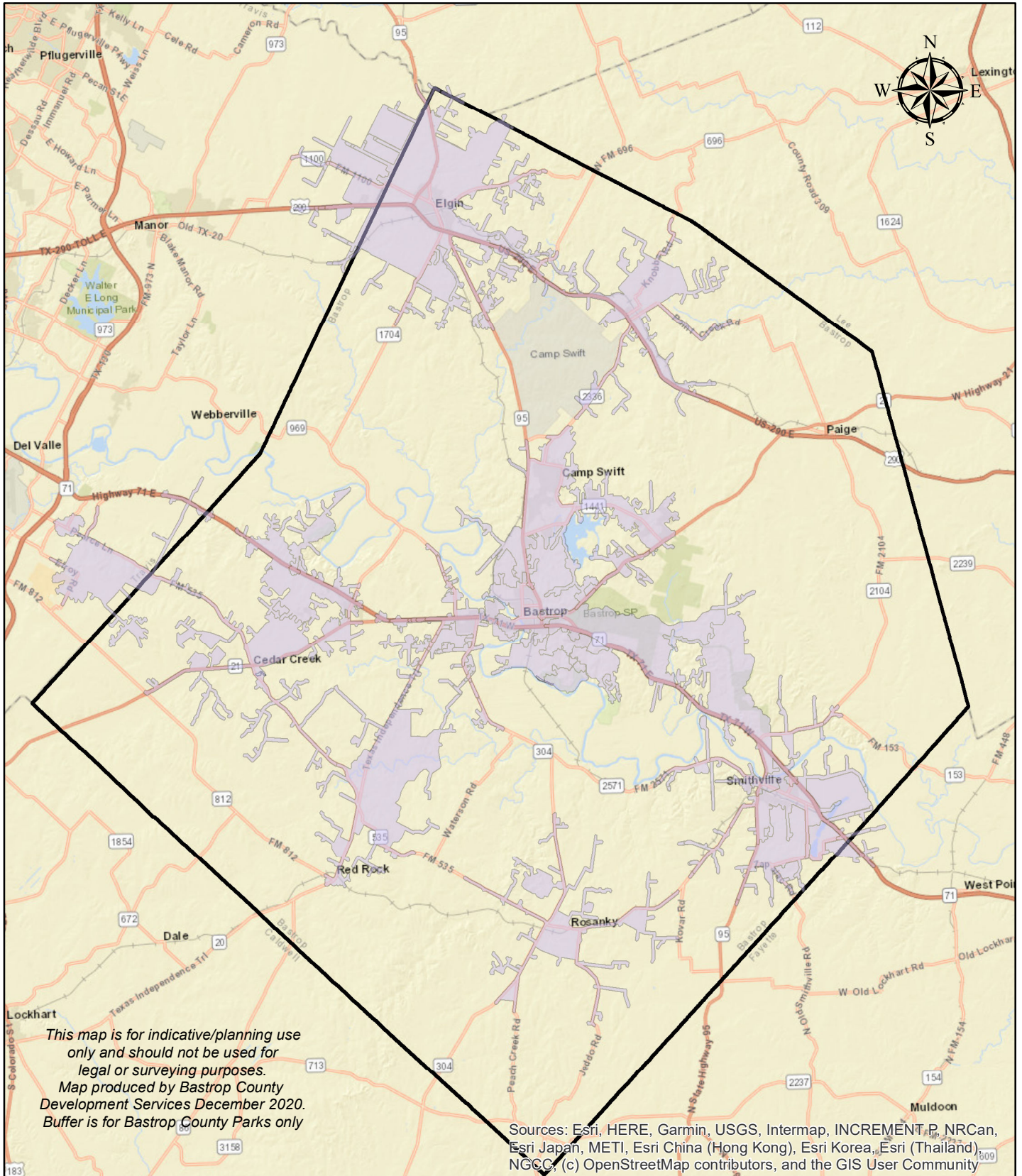
## Legend

 3 Miles from Park



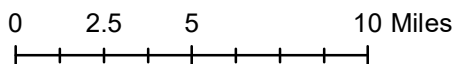
## Bastrop County Parks and Open Space Master Plan

# Parks in Bastrop County - 5 Mile Driving Distance



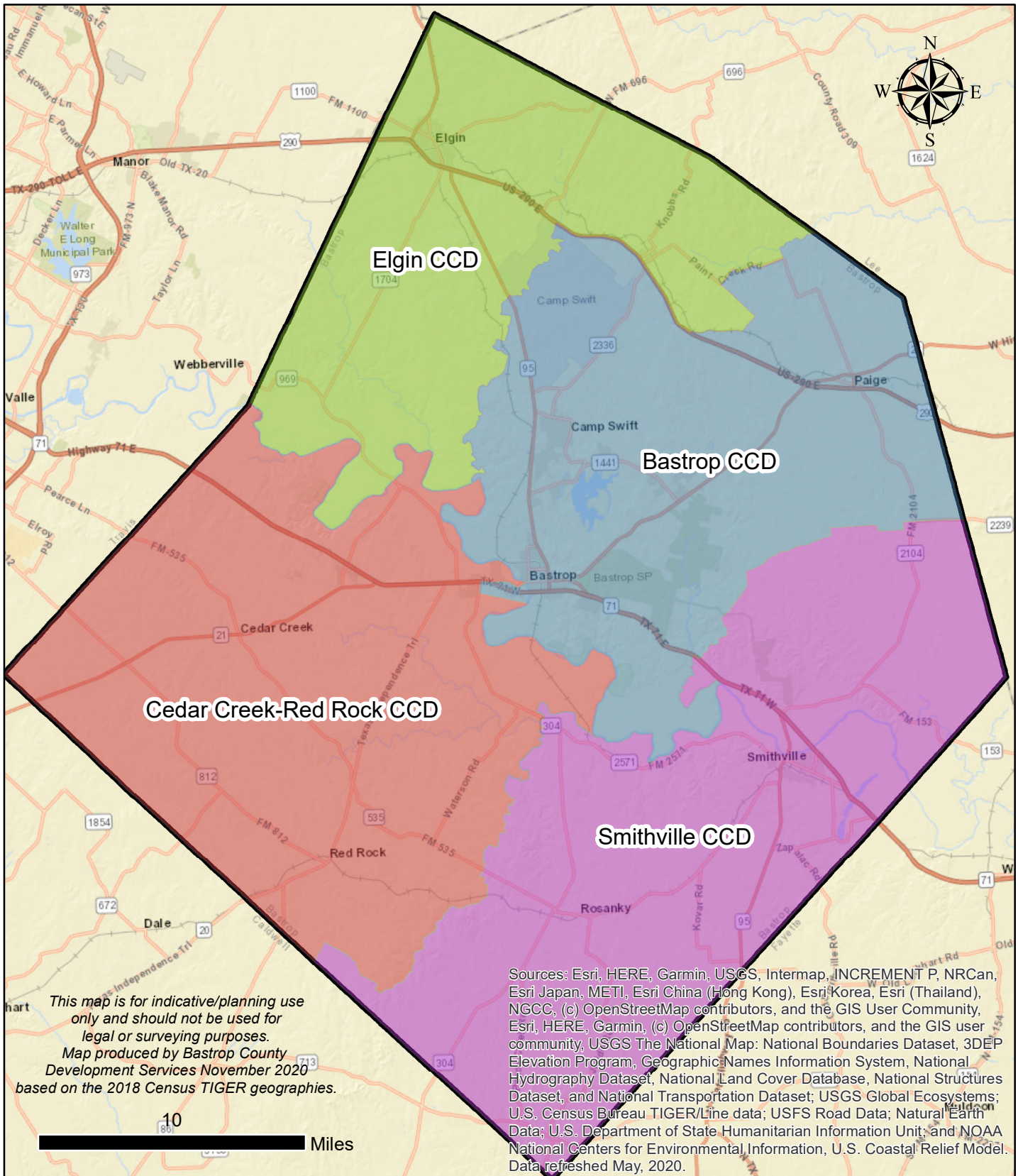
## Legend

 5 Miles from Park



## Bastrop County Parks and Open Space Master Plan

# Census County Divisions/ Planning Areas



**Legend**

**Census County Division**

- Bastrop CCD
- Cedar Creek-Red Rock CCD
- Elgin CCD
- Smithville CCD



## Bastrop County Parks and Open Space Master Plan